



ދިވެހިރާއްޖޭގެ ބިޔަފުޅުގެ ސަރުކާރު

## Maldives Meteorological Service

### Rainfall Outlook over Maldives

For October 2019

#### Summary

Normal rainfall is likely in northern atolls while rest of the country expected to receive above normal rainfall during October 2019.

#### Introduction

This consensus rainfall outlook for Maldives has been developed through an expert assessment of the prevailing regional and global climate conditions, seasonal forecast products of WMO Lead Centre for Long-Range Forecast Multi-Model Ensemble (LC-LRFMME) and calibrating climate models.

**El Niño -Southern Oscillation (ENSO):** ENSO-neutral conditions are present with above average Equatorial sea surface temperatures (SSTs) over western Pacific Ocean and below average in the eastern Pacific.

**Indian Ocean Dipole (IOD):** IOD is currently positive and models indicate continuing in the same condition throughout October.

**Madden-Julian Oscillation (MJO):** MJO is currently over Western Hemisphere with high amplitude. Weak amplitude and lack of eastward propagating expected till mid-October and eastward propagation thereafter.

#### Calibration of climate models

Calibration of GCM SST using global data set with station observed rain data suggests normal rainfall in northern atolls while above normal rainfall in central area and southern atolls during October 2019.

Probabilistic Multi-Model Ensemble of WMO lead centres for long-range climate indicates above normal rainfall across Maldives during the month.



[www.meteorology.gov.mv](http://www.meteorology.gov.mv)



[admin@meteorology.gov.mv](mailto:admin@meteorology.gov.mv)



+960 3323084



+960 3320021 / 3341797

22000 ، ހުލުހުލު  
ދިވެހިރާއްޖޭގެ ޖުމްހޫރިއްޔާ



Hulhule', 22000  
Republic of Maldives



@MetMaldives



#MetMaldives

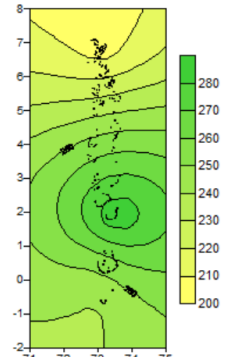


ދިވެހިރާއްޖޭގެ ބިޔަފުޅުގެ ސަރުކާރު



## Climate condition

During October, rainfall normally increases mostly in central and southern atolls.



*Spatial distribution of rainfall over the country during October*

## Conclusion

By considering the prevailing ENSO-neutral condition, positive IOD condition and expected MJO signal as well as Multi-Model Ensemble of WMO Lead Centres, rainfall likely to be above normal for central and southern atolls while normal over northern atolls during October 2019.

### *Note:*

*Normal: Amount of rainfall between 90% - 110% of the average for the period.*

*Above normal: Amount of rainfall more than 110% of the average for the period.*

*Below Normal: Amount of rainfall less than 90% of the average for the period.*

## References

Bureau of Meteorology, Australia. (2019, September 12). *Climate model summary for October to February 2020*. Retrieved from <http://www.bom.gov.au/climate/model-summary/#tabs=Indian-Ocean&region=NINO34>

Climate Prediction Center / NCEP. (2019, September 30). *ENSO: Recent evolution, current status and predictions*. Retrieved from [https://www.cpc.ncep.noaa.gov/products/analysis\\_monitoring/lanina/enso\\_evolution-status-fcsts-web.pdf](https://www.cpc.ncep.noaa.gov/products/analysis_monitoring/lanina/enso_evolution-status-fcsts-web.pdf)

Climate Prediction Center / NCEP. (2019, September 30). *Madden-Julian Oscillation: Recent evolution, current status and predictions*. Retrieved from [https://www.cpc.ncep.noaa.gov/products/precip/CWlink/MJO/ARCHIVE/PDF/mjo\\_evolution-status-fcsts-20190930.pdf](https://www.cpc.ncep.noaa.gov/products/precip/CWlink/MJO/ARCHIVE/PDF/mjo_evolution-status-fcsts-20190930.pdf)

Climate Prediction Center / NCEP. (2019, October 7). *Madden-Julian Oscillation: Recent evolution, current status and predictions*. Retrieved from [https://www.cpc.ncep.noaa.gov/products/precip/CWlink/MJO/ARCHIVE/PDF/mjo\\_evolution-status-fcsts-20191007.pdf](https://www.cpc.ncep.noaa.gov/products/precip/CWlink/MJO/ARCHIVE/PDF/mjo_evolution-status-fcsts-20191007.pdf)