



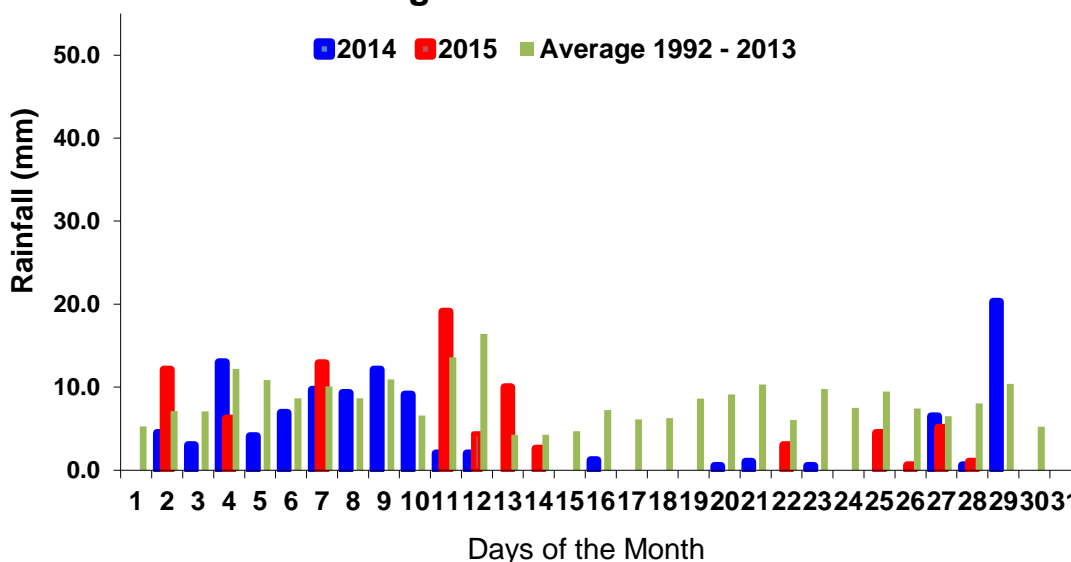
Climate Conditions in June 2015

Date: 12th July 2015

North

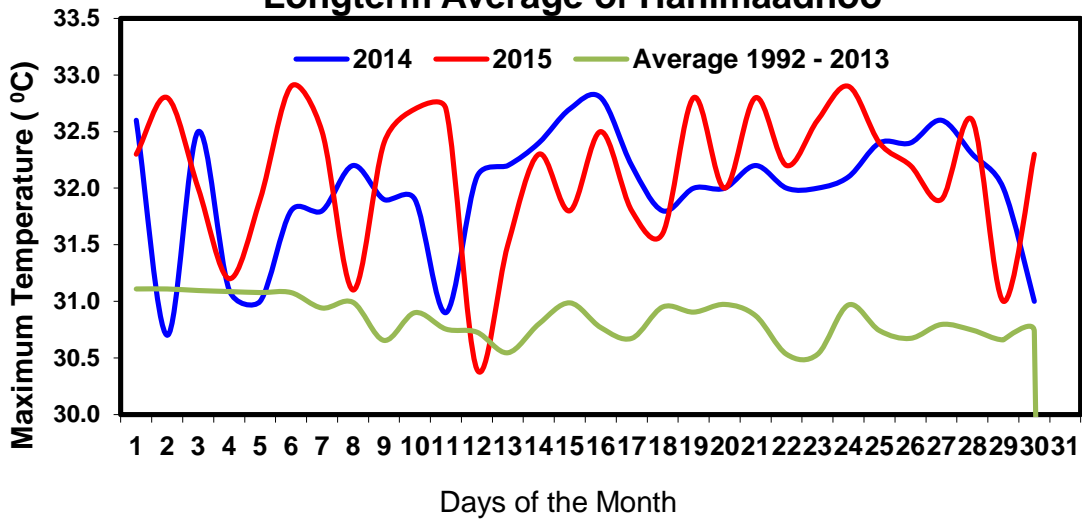
Last June, northern part of the country received a total rainfall of 82 mm. The highest rainfall within 24 hours was recorded on the 11th and amounts to 19 mm of rainfall. The rainfall received in June 2014 was 25 mm more than that of last June. Figure below shows daily total rainfall (2014 and 2015) and daily average rainfall for the Month of June for northern part of Maldives.

Comparison of June Rainfall with Longterm Average of Hanimaadhoo

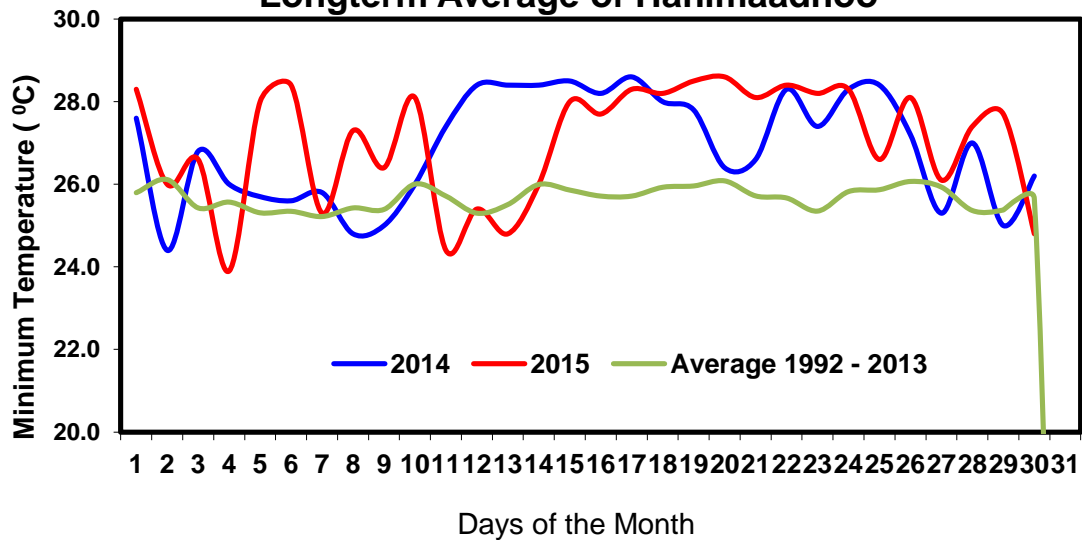


The highest temperature recorded in northern part of the Maldives last June was 33 degree Celsius, which was recorded on 06th, and 24th. The minimum temperature recorded in the same area for the last month was 24 degree Celsius and was recorded on 11th of June. However, the highest temperature recorded in June 2014 in northern part of the country was 33 degree Celsius, which was recorded on the 16th. Furthermore, the minimum temperature recorded in northern part in June 2014 was 24 degree Celsius, recorded on the 02nd. Figure below shows daily maximum and minimum temperature (2014 and 2015) and average maximum and minimum temperature for the Month of June for northern part of Maldives.

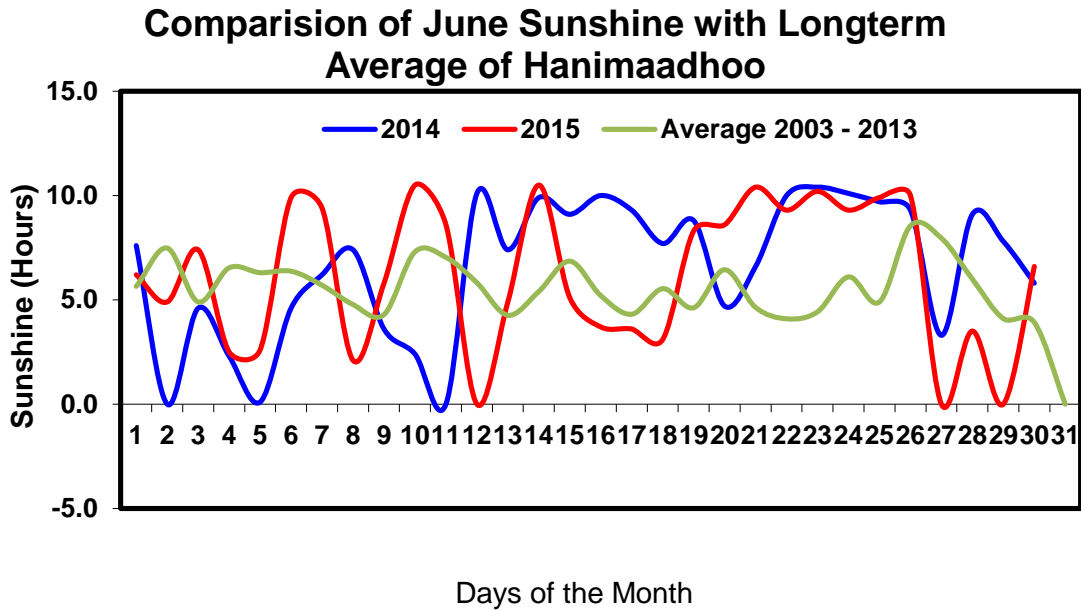
Comparison of June Maximum Temperature with Longterm Average of Hanimaadhoo



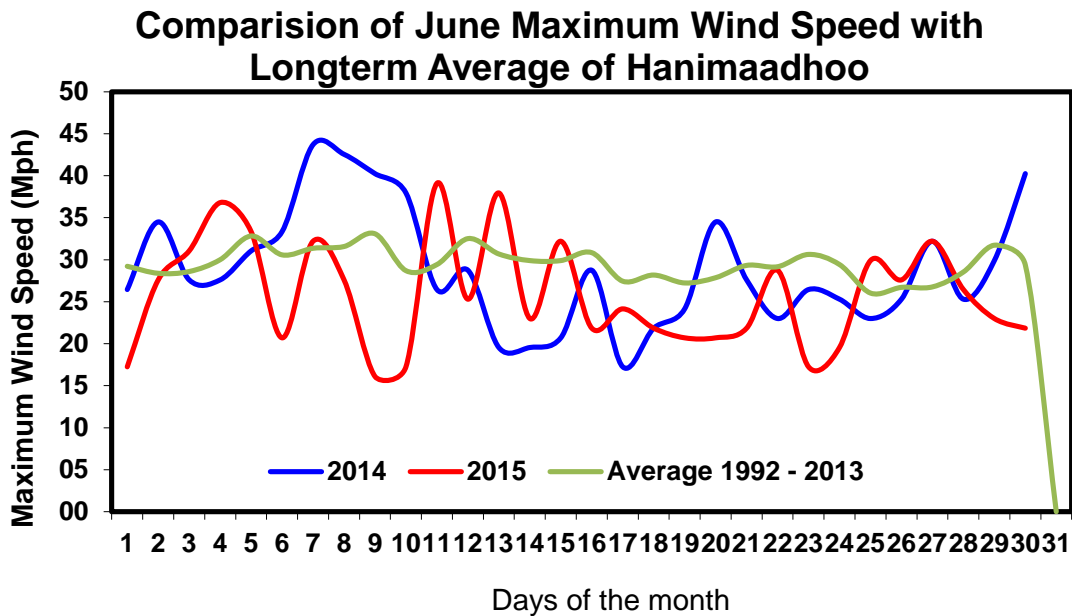
Comparison of June Minimum Temperature with Longterm Average of Hanimaadhoo



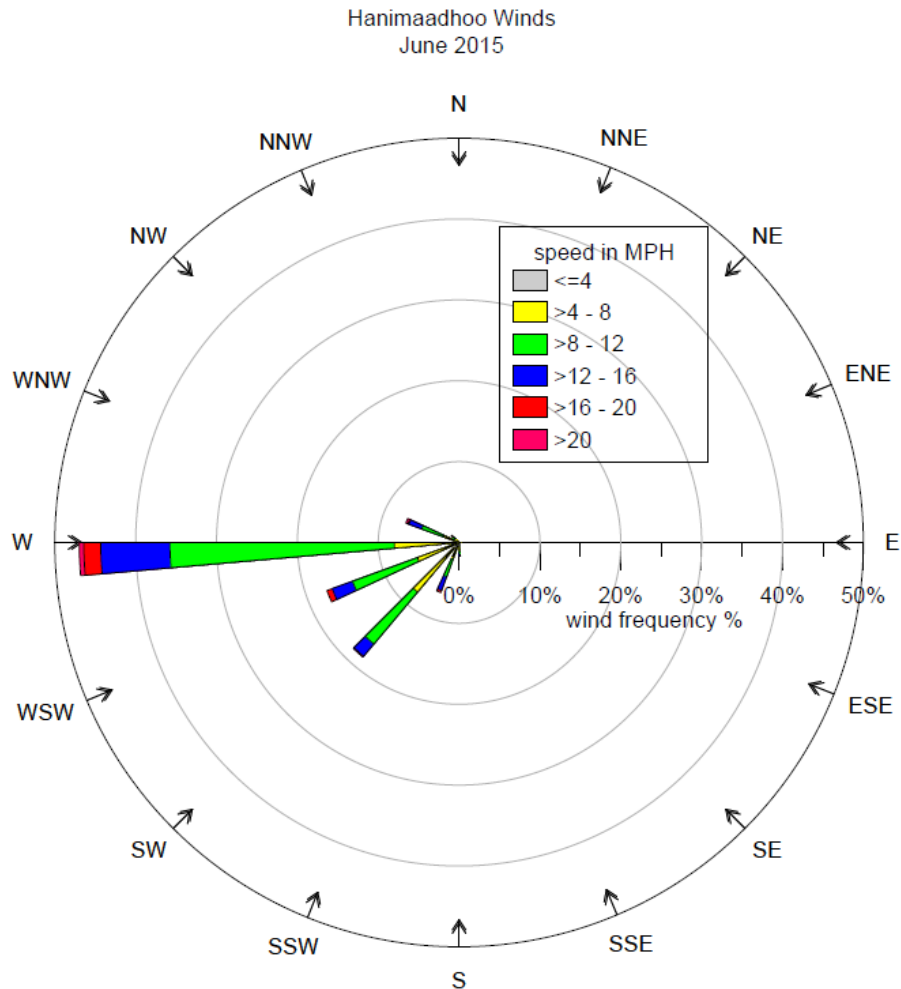
Northern part of the country received sunshine for 27 days last June, which amounts to 186 hours and 54 minutes. Furthermore, in June 2014 northern part of the country received sunshine for 30 days, which amounts to 106 hours and 18 minutes. Figure below shows daily sunshine (2014 and 2015) and daily average sunshine for the Month of June for northern part of Maldives.



Last June, the maximum wind speed in the northern part was experienced on the 12th at 04:01 hours from west-south-west at a speed of 39 mph. Furthermore, the maximum wind speed in the northern part in June 2014 was recorded on 07th at 23:39 hours from west at a speed of 44 mph. Figure below shows daily maximum wind speed (2014 and 2015) and daily average maximum wind speed for the Month of June for northern part of Maldives.



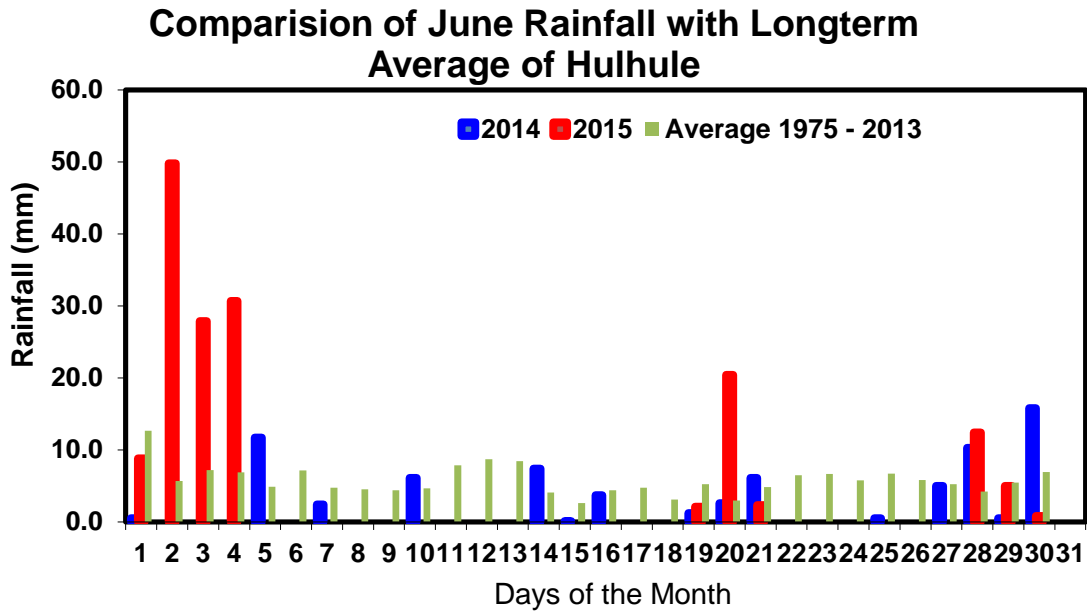
Below is wind frequency chart (Wind rose) of Hanimaadhoo for June 2015.



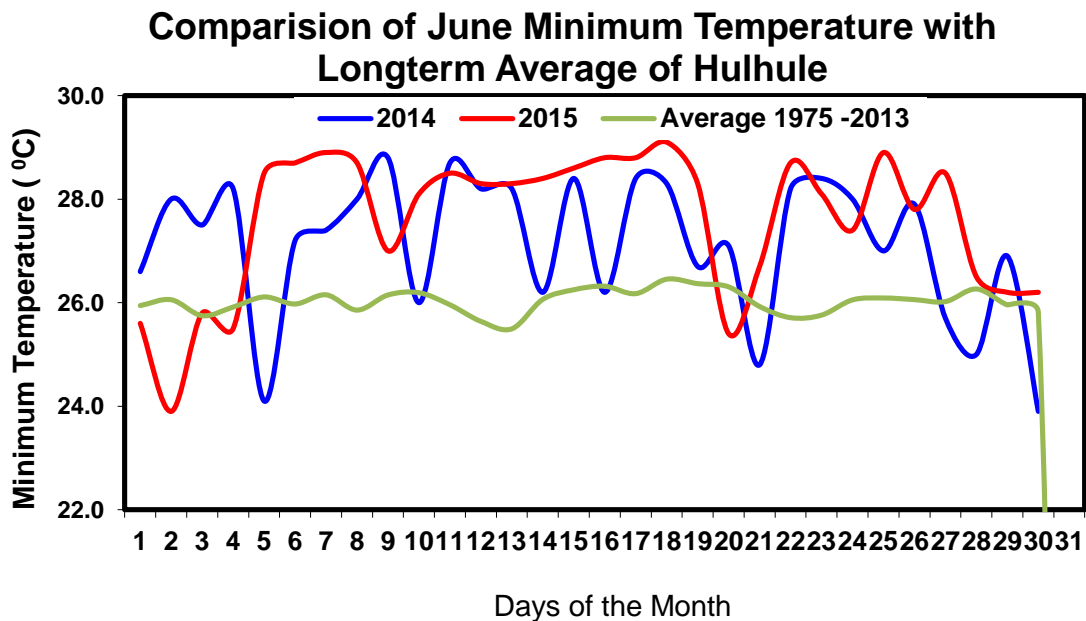
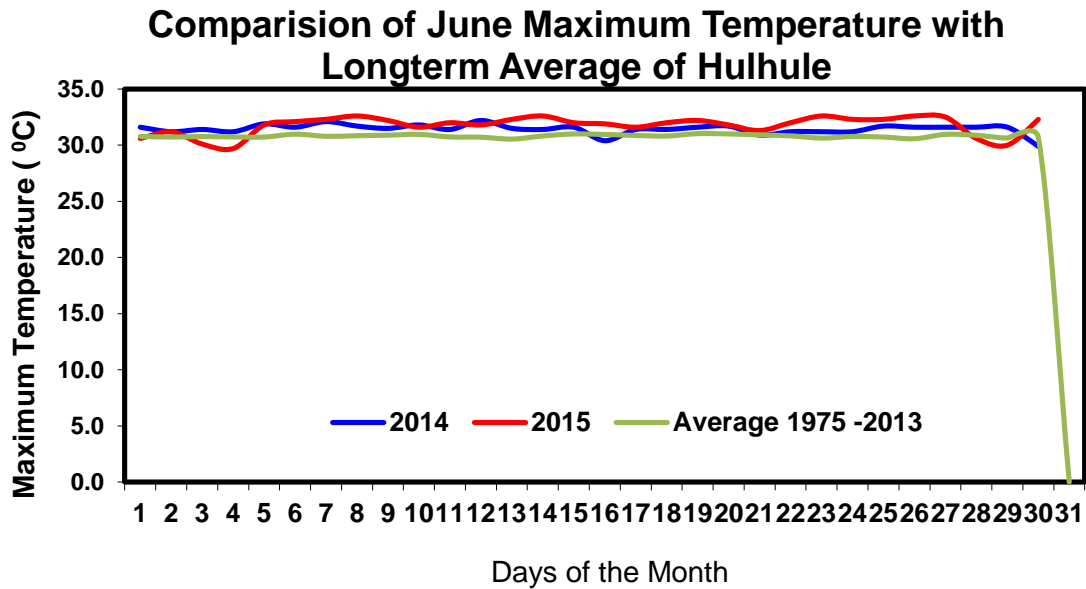
This is the wind rose for Hanimaadhoo based on hourly wind data of the month June 2015. This rose shows that the winds at Hanimaadhoo during the period blow from the *west* much of the time. In fact, the 2 spokes in the directions *west-south-west* and *south-west* comprise about 35% of all hourly wind directions. This also shows that the wind rarely blows from *west-north-west* and *south-south-west*.

Central part

Last June, central part of the country received a total rainfall of 160 mm. The highest rainfall within 24 hours was recorded on the 02nd and amounts to 50 mm of rainfall. The rainfall received in June 2014 was 86 mm less than that of last June. Figure below shows daily total rainfall (2014 and 2015) and daily average rainfall for the Month of June for central part of Maldives.

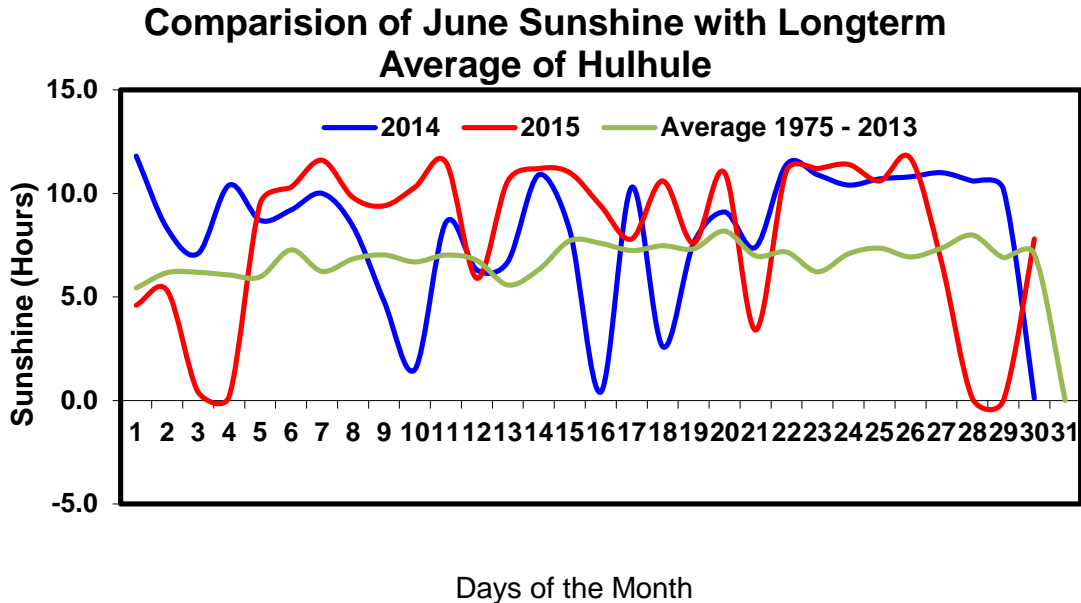


The highest temperature recorded in central part of the Maldives last June was 33 degree Celsius, which was recorded on the 08th, 14th and 26th. The minimum temperature recorded in the same area for the last month was 24 degree Celsius and was recorded on the 02nd of June. On the other hand, the highest temperature recorded in June 2014 in central part of the country was 32 degree Celsius, which was recorded on the 12th. Furthermore, the minimum temperature recorded in the central part in June 2014 was 24 degree Celsius, recorded on the 30th. Figure below shows daily maximum and minimum temperature (2014 and 2015) and average maximum and minimum temperature for the Month of June for central part of Maldives.

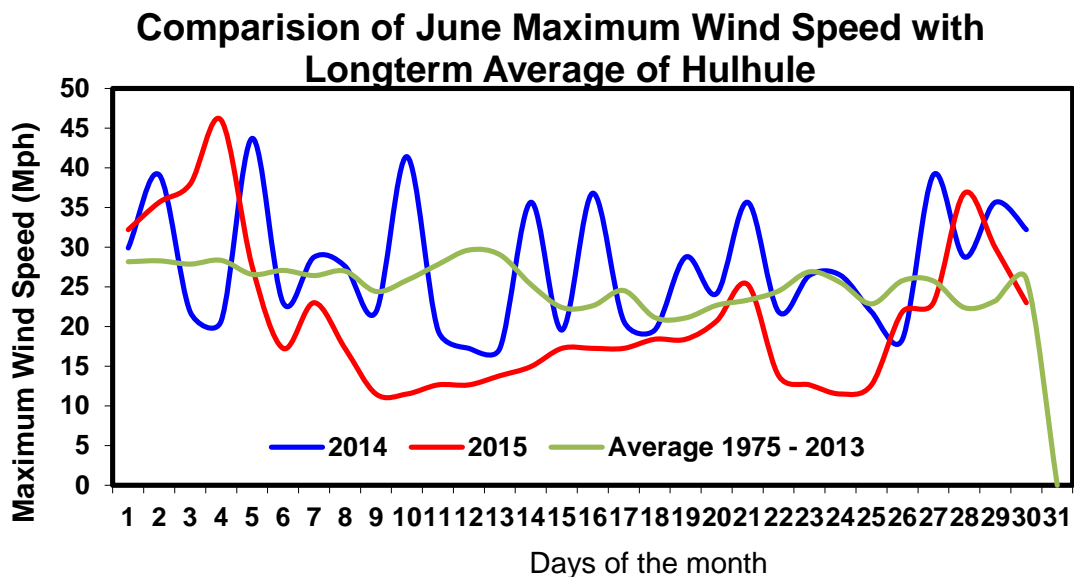


Central part of the country received sunshine for 29 days last June, which amounts to 242 hours. Furthermore, in June 2014 central part of the country received sunshine for 30 days, which amounts to 244 hours and 24 minutes. Figure below shows daily sunshine

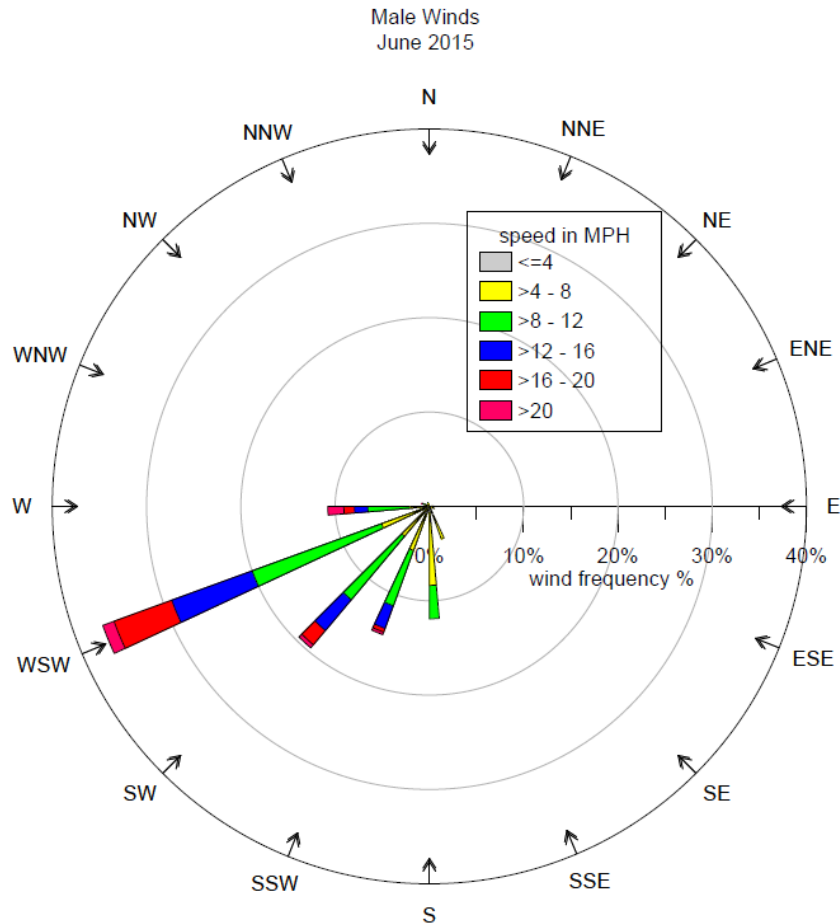
(2014 and 2015) and daily average sunshine for the Month of June for central part of Maldives.



Last June, the maximum wind speed in Central part of the country was experienced on the 04th at 20:07 hours from west at a speed of 46 mph. However, the maximum wind speed in central part in June 2014 was recorded on the 06th at 04:51 hours at a speed of 44 mph from west. Figure below shows daily maximum wind speed (2014 and 2015) and daily average maximum wind speed for the Month of June for central part of Maldives.



Below is wind frequency chart (Wind rose) of Hulhule for June 2015.

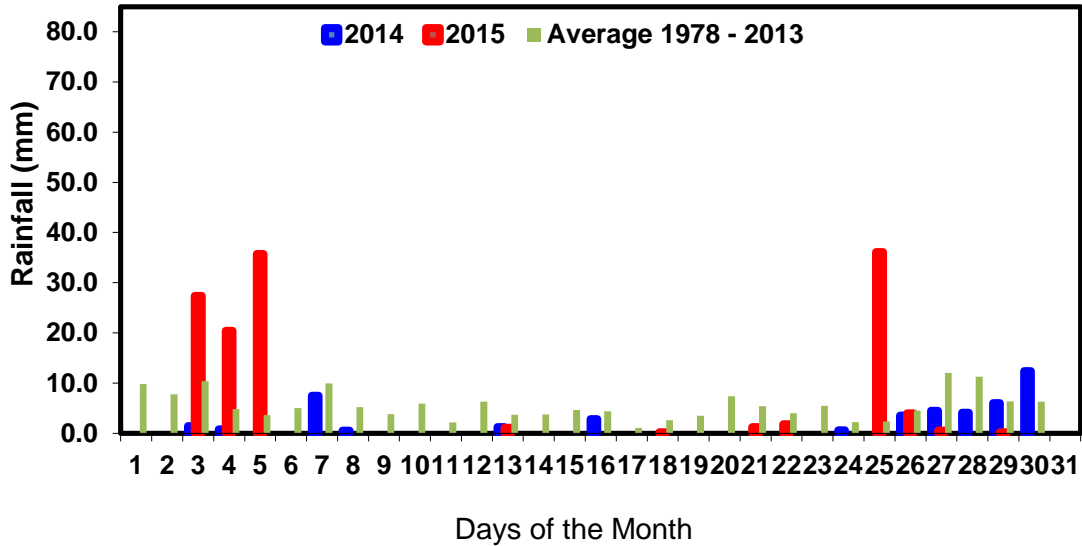


This is the wind rose for Hulhule' based on hourly wind data of the month June 2015. This rose shows that the winds at Hulhule' during the period blow from the *west-south-west* much of the time. In fact, the 4 spokes in the directions *south-west*, *south-south-west*, *south* and *west* comprise about 55% of all hourly wind directions. This also shows that the wind rarely blows from *south-south-east*.

South

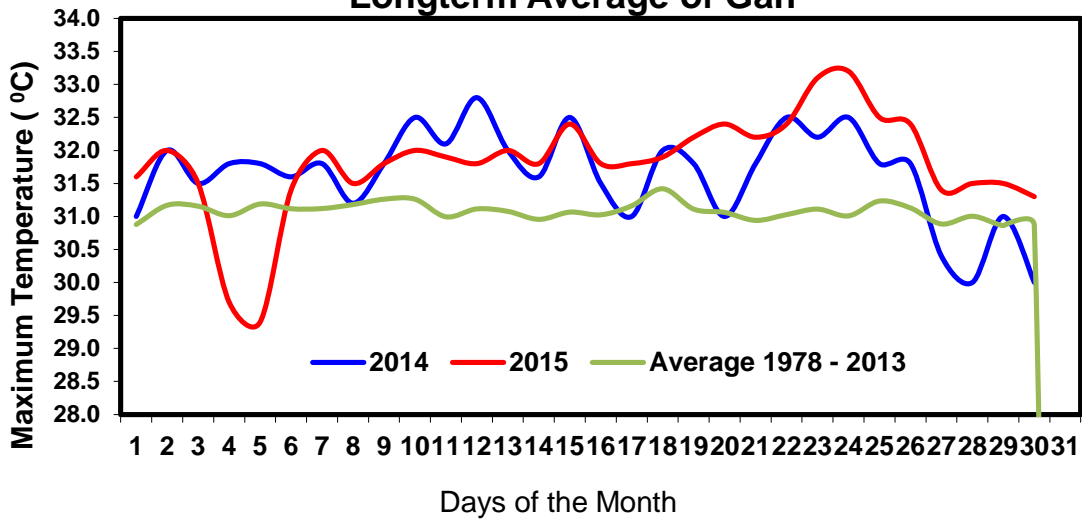
Last June, southern part of the country received a total rainfall of 129 mm. The highest rainfall within 24 hours was recorded on the 25th and amounts to 36 mm of rainfall. The rainfall received in June 2014 was 83 mm less than that of last June. Figure below shows daily total rainfall (2014 and 2015) and daily average rainfall for the Month of June for southern part of Maldives.

Comparison of June Rainfall with Longterm Average of Gan

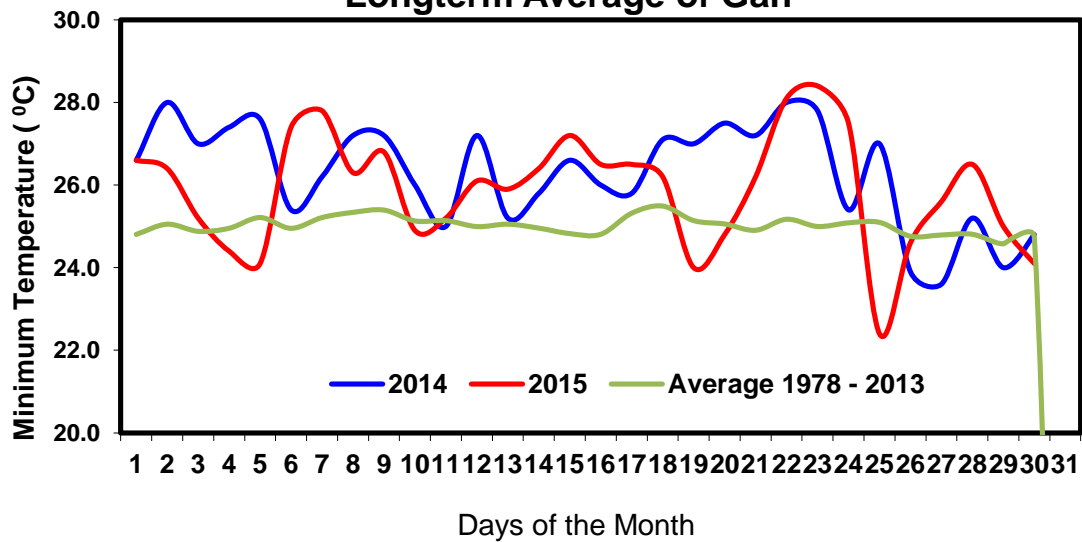


The highest temperature recorded in southern part of the Maldives last June was 33 degree Celsius, which was recorded on the 24th. The minimum temperature recorded in the same area for the last month was 24 degree Celsius and was recorded on the 19th of June. However, the highest temperature recorded in June 2014 in southern parts of the country was 33 degree Celsius, which was recorded on the 12th. Furthermore, the minimum temperature recorded in south in June 2014 was 24 degree Celsius, recorded on the 27th. Figure below shows daily maximum and minimum temperature (2014 and 2015) and average maximum and minimum temperature for the Month of June for southern part of Maldives.

Comparison of June Maximum Temperature with Longterm Average of Gan



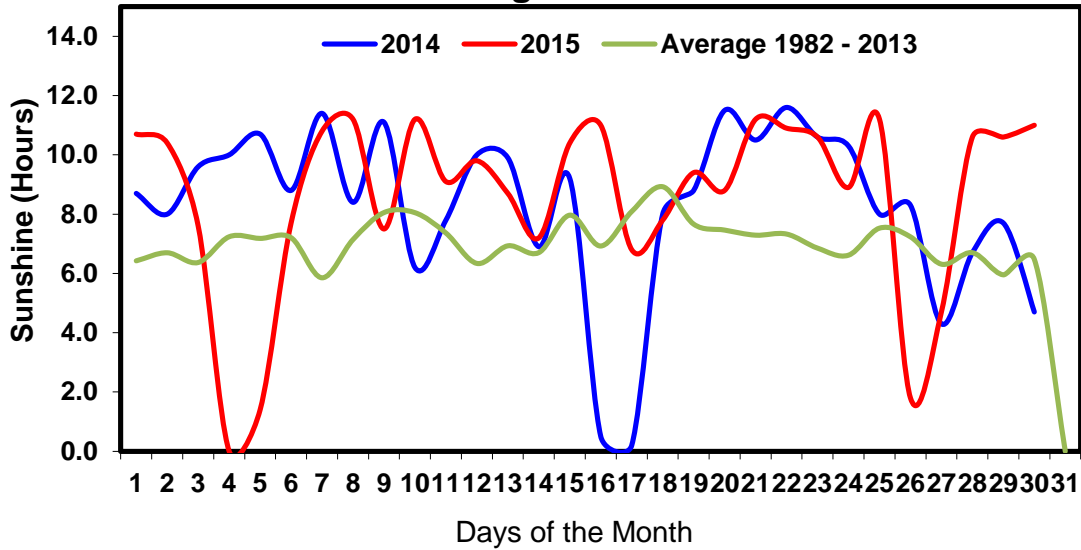
Comparison of June Minimum Temperature with Longterm Average of Gan



Southern part of the country received sunshine for 29 days last June, which amounts to 259 hours. Furthermore, in June 2014 southern part of the country received sunshine for 30 days, which amounts to 248 hours and 24 minutes. Figure below shows daily sunshine

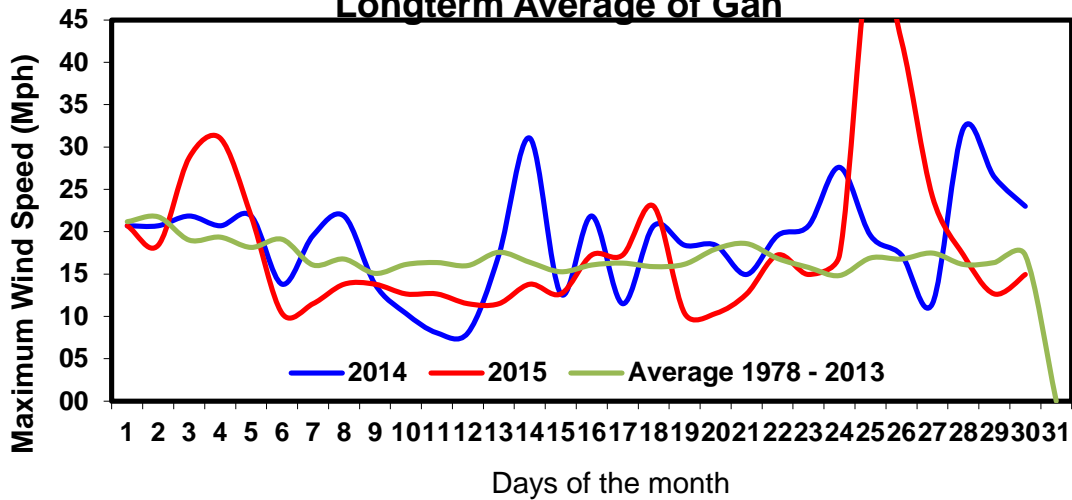
(2014 and 2015) and daily average sunshine for the Month of June for southern part of Maldives.

Comparison of June Sunshine with Longterm Average of Gan

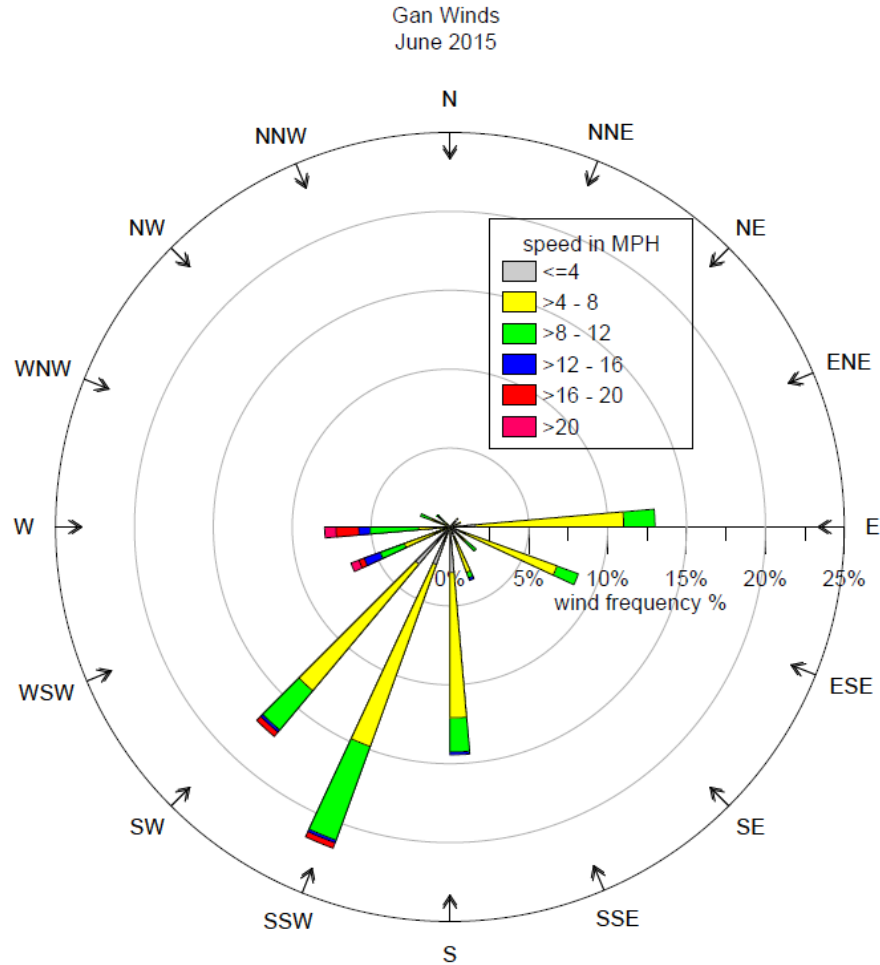


Last June, the maximum wind speed in south was experienced on the 26th at 04:20 hours from west at a speed of 53 mph. However, the maximum wind speed in southern atolls in June 2014 was recorded on the 28th at 05:20 hours at a speed of 32 mph from west. Figure below shows daily maximum wind speed (2014 and 2015) and daily average maximum wind speed for the Month of June for southern part of Maldives.

Comparison of June Maximum Wind Speed with Longterm Average of Gan



Below is wind frequency chart (Wind rose) of Gan for June 2015.



This is the wind rose for Gan based on hourly wind data of the month June 2015. This rose shows that the winds at Gan during the period blow from the *south-south-west*, *south-west* and *south* much of the time. This also shows that the wind rarely blows from *south-south-east*, *south-east* and *west-north-west*.