



ދިވެހިސަރުކާރުގެ ގެޒެޓް ގައި ބަޔާންކޮށްފައިވާ ގޮތުގައި

# Maldives Meteorological Service

## Rainfall and Temperature Outlook over Maldives

For January 2021

### Summary

Rainfall is likely above normal over the area from Haa Alifu atoll to Alifu Dhaalu atoll, normal from Vaavu atoll to Laamu atoll and below normal over rest of the of the country during January 2021. Temperature is expected to be slightly above normal during the month.

### Introduction

This consensus outlook for Maldives has been developed through assessments including prevailing regional and global climate condition and prediction of various models, seasonal forecast of WMO Lead Centre for Long-Range Forecast Multi-Model Ensemble (LC-LRFMME), NMME Probability Forecasts of Monthly Climate Anomalies and forecasts from Regional Integrated Multi-Hazard Early Warning System (RIMES).

**El Niño -Southern Oscillation (ENSO):** La Niña condition persists with currently below average Equatorial Sea Surface Temperatures (SSTs) from west-central to eastern Pacific Ocean. The condition is likely throughout January.

**Indian Ocean Dipole (IOD):** Neutral IOD condition persists and models suggest same condition during the month.

**Madden-Julian Oscillation (MJO):** MJO is currently weak over western Indian Ocean. It is expected to become strong during first week and propogate eastward to eastern Indian Ocean duirng the second week of the month. The strong signal is likely become weak towards end of the month.

### Global Producing Centres and Lead Centre

Probabilistic Multi-Model Ensemble of WMO Lead Centre for Long Range Forecast Multi-Model Ensemble indicates above normal rainfall over the area north of Kaafu Atoll, normal rainfall for area from Laamu Atoll to Vaavu Atoll and below normal rainfall from Gaafu Alifu Atoll to Addu City. Most individual models indicate below normal rainfall from Addu City to



[www.meteorology.gov.mv](http://www.meteorology.gov.mv) [info@met.gov.mv](mailto:info@met.gov.mv) +960 3323084 +960 3320021

22000 ގަވާއިދު 22000  
ދިވެހިސަރުކާރުގެ ގެޒެޓް ގައި ބަޔާންކޮށްފައިވާ ގޮތުގައި  
Hulhule' 22000  
Republic of Maldives

@MetMaldives

#MetMaldives





Gaafu Dhaalu Atoll, above normal rainfall from Kaafu Atoll to Haa Alifu Atoll and normal rainfall to rest of the country during January.

Probabilistic Multi-Model Ensemble of WMO Lead Centre for Long Range Forecast Multi-Model Ensemble indicates above normal Temperature across the country for January 2021.

### Climate condition

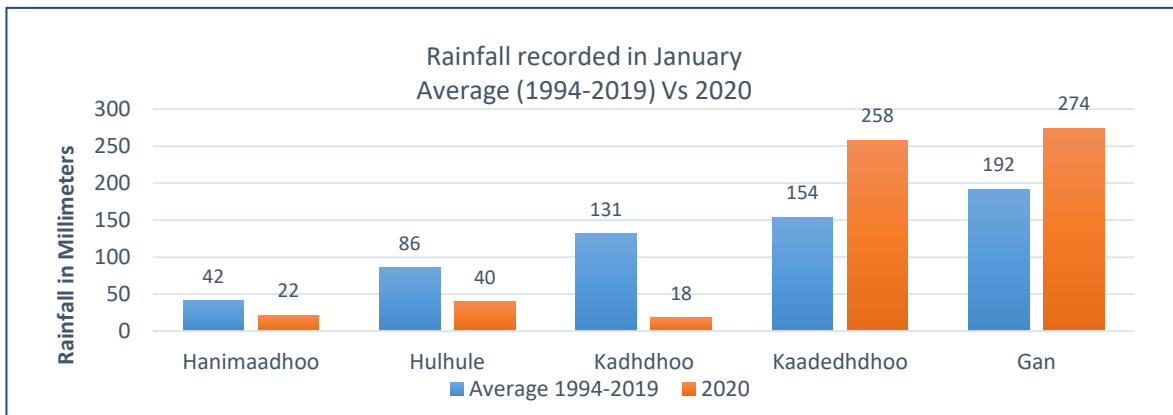


Figure 1- Southern 2 stations recorded higher than normal rainfall while other stations recorded lower rainfall than normal in January 2020.

Figure 1 shows rainfall recorded in January between 1994 and 2020. in five Meteorological stations.

Figure 2 shows spatial distribution of rainfall across the country during December. Highest amount rainfall receives southern-most atolls. Northern and central atolls receive relatively less rain than central and southern atolls.

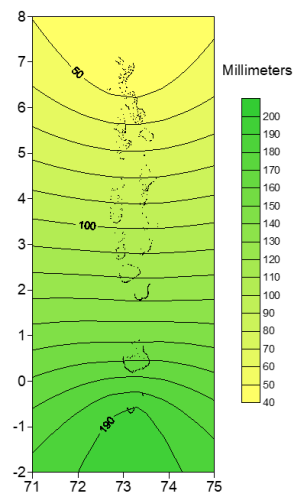


Figure 2 Spatial distribution of rainfall over the country during January (1994-2020)

### Conclusion

By considering the Multi-Model Ensemble of WMO Lead Centres, individual models, NMME Probability Forecasts, RIMES forecasts, climate data, expected MJO, IOD and ENSO conditions, during January 2021, rainfall likely is above normal over the area from Haa Alifu atoll to Alifu Dhaalu atoll, normal from Vaavu atoll to Laamu atoll and below normal over rest of the of the country.

Temperature is likely to be slightly above normal across the country during the month.

#### Note:

*Normal: Amount of rainfall between 90% - 110% of the average for the period.*

*Above normal: Amount of rainfall more than 110% of the average for the period.*

*Below Normal: Amount of rainfall less than 90% of the average for the period.*

#### References



Bureau of Meteorology, Australia. (2020, December 22). *Climate Model Summary for January to May 2021*. Retrieved from <http://www.bom.gov.au/climate/model-summary/#tabs=Indian-Ocean&region=NINO34>

Climate Prediction Center / NCEP. (2020, December 28). *ENSO: Recent evolution, current status and predictions*. Retrieved from [https://www.cpc.ncep.noaa.gov/products/analysis\\_monitoring/lanina/enso\\_evolution-status-fcsts-web.pdf](https://www.cpc.ncep.noaa.gov/products/analysis_monitoring/lanina/enso_evolution-status-fcsts-web.pdf)

Climate Prediction Center / NCEP. (2020, December 28). *Madden-Julian Oscillation: Recent evolution, current status and predictions*. Retrieved from [https://www.cpc.ncep.noaa.gov/products/precip/CWlink/MJO/ARCHIVE/PDF/mjo\\_evolution-status-fcsts-20201228.pdf](https://www.cpc.ncep.noaa.gov/products/precip/CWlink/MJO/ARCHIVE/PDF/mjo_evolution-status-fcsts-20201228.pdf)

National Oceanic and Atmospheric Administration. (2020, December). Prob prate forecast. Retrieved from [https://www.cpc.ncep.noaa.gov/products/NMME/prob/images/prob\\_ensemble\\_prate\\_lead1.png](https://www.cpc.ncep.noaa.gov/products/NMME/prob/images/prob_ensemble_prate_lead1.png)

National Oceanic and Atmospheric Administration. (2020, December). Prob tmp2m forecast. Retrieved from [https://www.cpc.ncep.noaa.gov/products/NMME/prob/images/prob\\_ensemble\\_tmp2m\\_lead1.png](https://www.cpc.ncep.noaa.gov/products/NMME/prob/images/prob_ensemble_tmp2m_lead1.png)