



ދިވެހިރާއްޖޭގެ ބިލްދުގެ ސަރުކާރު

Maldives Meteorological Service

Rainfall Outlook over Maldives

For November 2019

Summary

Above normal rainfall is likely in northern and central atolls while southern atolls is likely to get normal to above normal rainfall during November 2019.

Introduction

This consensus rainfall outlook for Maldives has been developed through an expert assessment of the prevailing regional and global climate conditions, seasonal forecast products of WMO Lead Centre for Long-Range Forecast Multi-Model Ensemble (LC-LRFMME) and calibrating climate models.

El Niño -Southern Oscillation (ENSO): ENSO-neutral conditions are present with above average Equatorial Sea Surface Temperatures (SSTs) over western and central Pacific Ocean and below average in the eastern Pacific.

Indian Ocean Dipole (IOD): IOD has been positive and models indicate continuing in the same condition throughout November.

Madden-Julian Oscillation (MJO): MJO is currently over Maritime Continent and likely to continue eastward propagation. The signal is expected to increase in strength in the first week and become weak thereafter.

Calibration of climate models

Calibration of GCM output, using global data set with station observed rain data suggests above normal rainfall across the country during November 2019.

Probabilistic Multi-Model Ensemble of WMO lead centres for long-range climate indicates normal rainfall in southern-most atolls and above normal rainfall for rest of the Maldives during the month.



www.meteorology.gov.mv



admin@meteorology.gov.mv



+960 3323084



+960 3320021 / 3341797

22000 ، ދުވަސް
ދިވެހިރާއްޖޭގެ ބިލްދުގެ ސަރުކާރު



Hulhule', 22000
Republic of Maldives



@MetMaldives



#MetMaldives

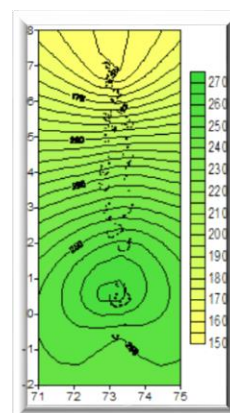
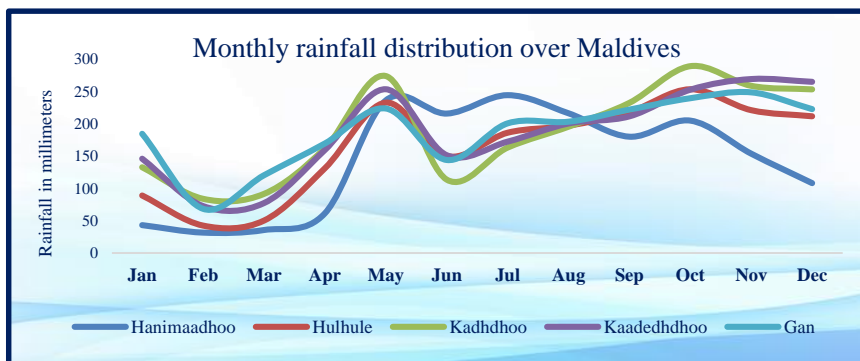


ދިވެހިރާއްޖޭގެ ބިލްދުގެ ސަރުކާރު



Climate condition

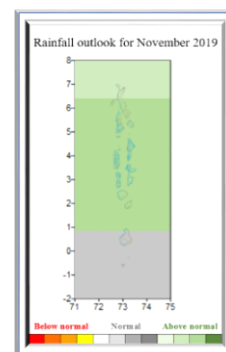
November is the last month of southwest monsoon and rainfall amount normally decreases compare to October. During this month, southern atolls receive relatively higher rainfall than central and northern atolls.



Spatial distribution of rainfall over the country during November

Conclusion

By considering the prevailing ENSO-neutral condition, strongly positive IOD condition and expected MJO signal as well as Multi-Model Ensemble of WMO Lead Centres, rainfall is likely to be above normal for northern and central atolls while normal-above normal in southern atolls during November 2019.



Note:

Normal: Amount of rainfall between 90% - 110% of the average for the period.

Above normal: Amount of rainfall more than 110% of the average for the period.

Below Normal: Amount of rainfall less than 90% of the average for the period.

References

Bureau of Meteorology, Australia. (2019, October 29). ENSO Wrap-Up current state of the Pacific and Indian ocean Retrieved from <http://www.bom.gov.au/climate/enso/#tabs=Indian-Ocean>

Climate Prediction Center / NCEP. (2019, October 28). ENSO: Recent evolution, current status and predictions. Retrieved from https://www.cpc.ncep.noaa.gov/products/analysis_monitoring/lanina/enso_evolution-status-fcsts-web.pdf

Climate Prediction Center / NCEP. (2019, October 28). Madden-Julian Oscillation: Recent evolution, current status and predictions. Retrieved from https://www.cpc.ncep.noaa.gov/products/precip/CWlink/MJO/ARCHIVE/PDF/mjo_evolution-status-fcsts-20191028.pdf